

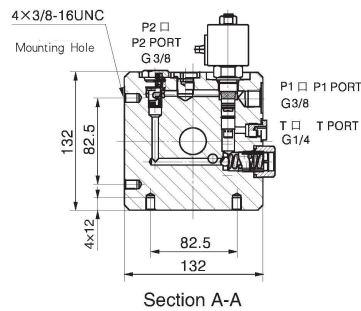
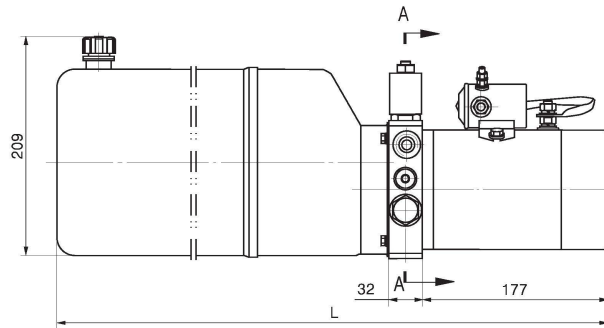
## FORK LIFT POWER UNITS 1

### General Description

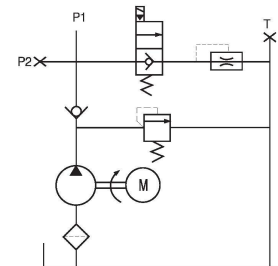
Equipped with a high pressure gear pump, a DC motor, a multi-functional manifold, valves and a tank ect. This power unit features power up gravity down function. Start the motor to lift the machine and the lowering movement is activated by the solenoid valve with the lowering speed controlled by the pressure compensated flow control valve. Products of this series can be widely used in the industry of logistic devices such as fork lift, mini lift table ect.



### Outline Dimension



### Hydraulic Circuit Diagram



### Model Specifications

Model	Motor Volt	Motor power	Rated Speed	Displacement	System pressure	Tank Capacity	L(mm)
YBZ-F1.2A1W2/WUAAD1	12VDC	1.5KW	2500 RPM	1.2mL/r	20MPa	3.5L	409
YBZ-F1.6B1W2/WUAAD1				1.6mL/r		5L	459
YBZ-F2.1B1W2/WUAAD1				2.1mL/r		5L	459
YBZ-F2.1B2A2/WUABD1	24VDC	2KW		2.1mL/r		6L	509
YBZ-F2.5C2A2/WUABD1				2.5mL/r		8L	579
YBZ-F2.7C2A2/WUABD1				2.7mL/r		8L	579

Remark: 1. Please go to page 36 or consult our sales engineer for the different pump displacement, motor power or tank capacity.  
2. The manual override function is available on request.

### Special Notes

1. The duty of this power unit is S3, i.e., 30 seconds on and 270 seconds off.
2. Clean all the hydraulic parts concerned before mounting the power unit.
3. Viscosity of the hydraulic oil should be 15~68 cst, which should also be clean and free of impurities. N46 hydraulic oil is recommended.
4. Oil changing is required after the initial 100 operation hours, afterwards once every 3000 hours.
5. The power unit should be mounted horizontally.

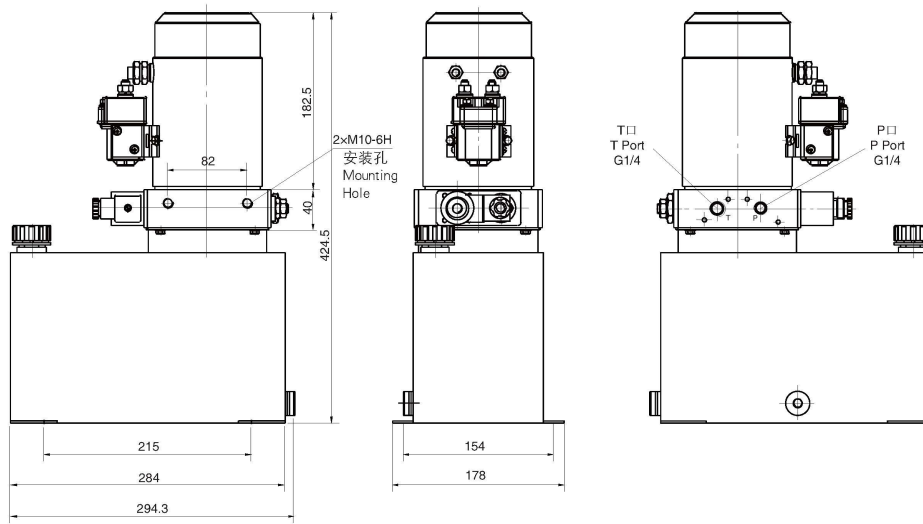
## FORK LIFT POWER UNITS 5

### General Description

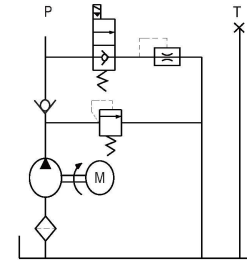
Equiped with a high pressure gear pump, a DC motor, a multi-functional manifold, valves and a tank, ect. This power unit features power up gravity down actions. Start the motor to lift the machine and the lowering movement is activated by the solenoid valve with the lowering speed controlled by the pressure compensated flow control valve. The products are widely used in the industry of logistic devices such as fork lift, mini lift table ect.



### Outline Dimension



### Hydraulic Circuit Diagram



### Model Specifications

Model	Motor Volt	Motor power	Rated Speed	Displacement	System pressure	Tank Capacity
YBZ—F1.2B1W2/WUDAN1	12VDC	1.5KW	2500rpm	1.2mL/r	20MPa	6L
YBZ—F1.6B1W2/WUDAN1				1.6mL/r		6L
YBZ—F2.7B2A2/WUDBN1	24VDC	2.2KW		2.7mL/r		6L
YBZ—F2.5B2A2/WUDBN1				2.5mL/r		6L

Remark: 1. Please go to page 36 or consult our sales engineer for the different pump displacement, motor power or tank capacity.  
2. The manual override function is available on request.

### Special Notes

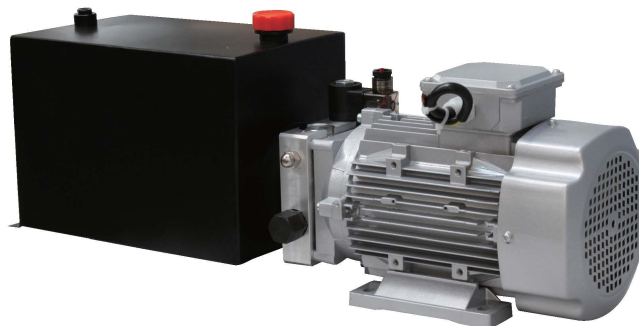
1. The duty of this power unit is S3, i.e., 30 seconds on and 270 seconds off.
2. Clean all the hydraulic parts concerned before mounting the power unit.
3. Viscosity of the hydraulic oil should be 15~68 cst, which should also be clean and free of impurities. N46 hydraulic oil is recommended.
4. Check the oil level in the tank after the initial operation of the power unit.
5. Oil changing is required after the initial 100 operation hours, afterwards once every 3000 hours.



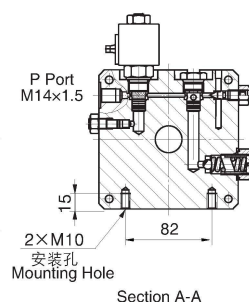
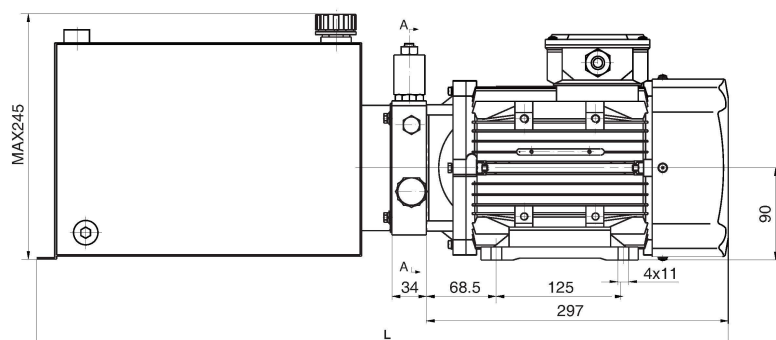
## LIFT TABLE POWER UNITS 2

### General Description

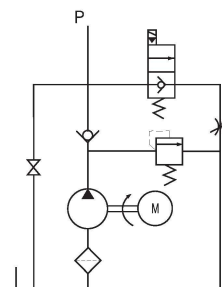
This power unit is designed exclusively for large sized lift table, which consists of high pressure gear pump, AC motor, multi-functional manifold, valves, tank, ect. The lowering movement is activated by the solenoid valve with the speed controlled by the adjustable throttle valve.



### Outline Dimension



### Hydraulic Circuit Diagram



### Model Specifications

Model	Motor Volt	Motor power	Rated Speed	Displacement	System pressure	Tank Capacity	L(mm)
YBZ—F2.5E3H2/LCCEG1	220VAC	2.2KW	2800rpm	2.5mL/r	18MPa	12L	677
YBZ—E3.2F3H2/LCCEG1				3.2mL/r	14MPa	14L	727
YBZ—D3.7G3H2/LCCBG1				3.7mL/r	12MPa	16L	777
YBZ—E3.7G4I2/LCCEG1	380VAC	3KW		3.7mL/r	16MPa	16L	777
YBZ—E4.2H4I2/LCCEG1				4.2mL/r	15MPa	20L	877
YBZ—D5J4I2/LCCEG1				5mL/r	12MPa	25L	1002

Remark: 1. Please go to page 36 or consult our sales engineer for the different pump displacement, motor power or tank capacity.  
2. 60HZ motors with CSA or UL certification are available upon request.

### Special Notes

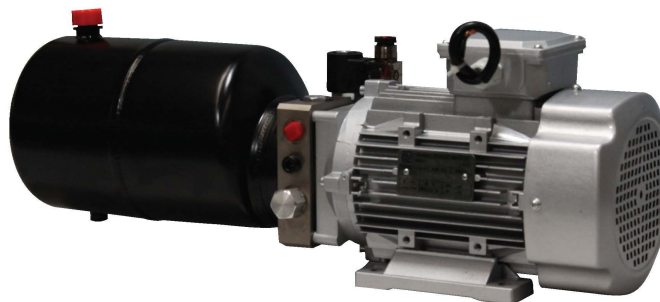
1. The power unit is of S3 duty, which can only be worked intermittently, ie., 1minute on and 9 minutes off.
2. Clean all the hydraulic parts concerned before mounting the power unit.
3. Viscosity of the hydraulic oil should be 15~68 cst, which should also be clean and free of impurities. N46 hydraulic oil is recommended.
4. Oil changing is required after the initial 100 operation hours, afterwards once every 3000 hours.
5. The power unit should be mounted horizontally.



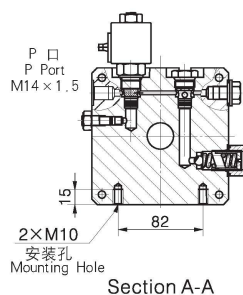
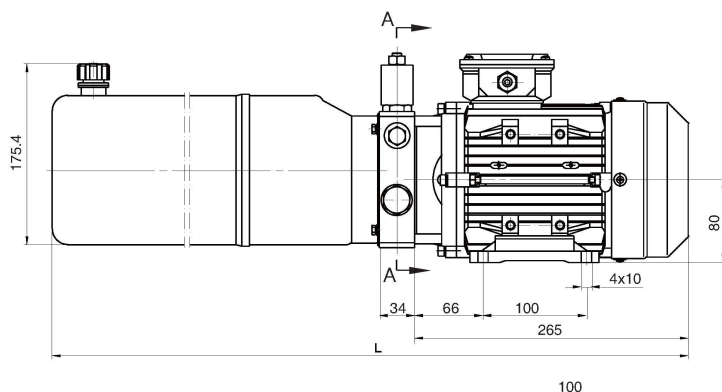
## LIFT TABLE POWER UNITS 1

### General Description

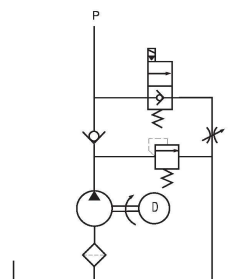
Consisting of high pressure gear pump,AC motor, multi-functional manifold, valves, tank etc. this power unit has been widely used in the industry of logistic devices such as minifork lift, scissors lift and ariel working platform The lowering movement is controlled by the solenoid valve with the speed controlled by the adjustable throttle valve.



### Outline Dimension



### Hydraulic Circuit Diagram



### Model Specifications

Model	Motor Volt	Motor power	Rated Speed	Displacement	System pressure	Tank Capacity	L(mm)
YBZ-F1.2A3E2/LBABF1	220VAC	0.75KW	1450rpm	1.2mL/r	20MPa	3.5L	499
YBZ-E1.6A3E2/LBABF1				1.6mL/r	16MPa	3.5L	499
YBZ-D2.1B3E2/LBABF1				2.1mL/r	12MPa	6L	599
YBZ-F1.2B4F2/LCABF1	380VAC	1.1KW	2880rpm	1.2mL/r	20MPa	6L	
YBZ-E1.6B4F2/LCABF1				1.6mL/r	16MPa	6L	
YBZ-D2.1C4F2/LCABF1				2.1mL/r	12MPa	8L	669

Remark: 1. Please go to page 36 or consult our sales engineer for the different pump displacement, motor power or tank capacity.  
2. The manual override function is available on request.  
3. 60HZ motors with CSA or UL certification are available upon request.

### Special Notes

1. The power unit is of S3 duty, which can only be worked intermittently, ie., 1minute on and 9 minutes off.
2. Clean all the hydraulic parts concerned before mounting the power unit.
3. Viscosity of the hydraulic oil should be 15-68 cst,which should also be clean and free of impurities.N46 hydraulic oil is recommended.
4. Oil changing is required after the initial 100 operation hours, afterwards once every 3000 hours.
5. The power unit should be mounted horizontally.



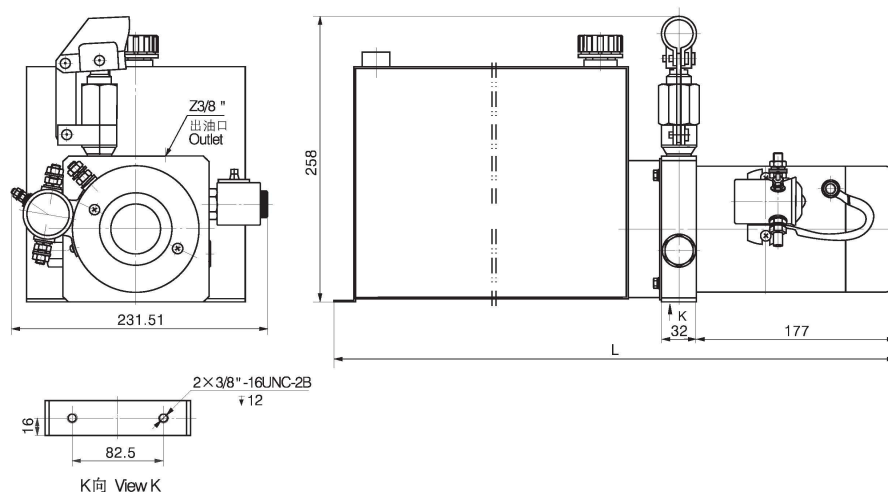
## TIPPER TRAILER POWER UNITS 1

### General Description

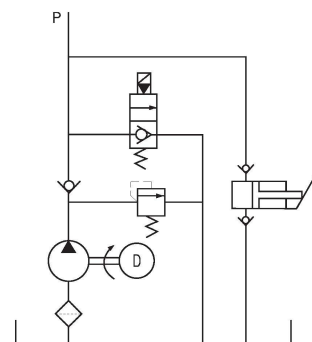
This power unit is designed exclusively for small tipper, consisting of high pressure gear pump, DC motor, multi-functional manifold, valves and tank, etc. The hand pump with a displacement of 8cc per stroke works as a backup power source of lifting the tipper in case of power failure with the lowering movement is activated by the solenoid valve.



### Outline Dimension



### Hydraulic Circuit Diagram



### Model Specifications

Model	Motor Volt	Motor power	Rated Speed	Displacement	System pressure	Tank Capacity	L(mm)
YBZ-F2.1E1W27/WUCAK1	12VDC	1.5KW	2500RPM	2.1mL/r	20MPa	12L	559
YBZ-F2.1H1W27/WUCAK1						20L	791
YBZ-F2.5E2A27/WUCBK1	24VDC	2.0KW		2.5mL/r	18MPa	12L	559
YBZ-F2.7H2A27/WUCBK1				2.7mL/r		20L	791

Remark: 1. Please go to page 36 or consult our sales engineer for the different pump displacement, motor power or tank capacity.  
2. The manual override function is available on request.

### Special Notes

1. The duty of this power unit is S3, i.e., 30 seconds on and 270 seconds off.
2. Clean all the hydraulic parts concerned before mounting the power unit.
3. Viscosity of the hydraulic oil should be 15~68 cst, which should also be clean and free of impurities. N46 hydraulic oil is recommended.
4. The power unit should be mounted horizontally.
5. Check the oil level in the tank after the initial operation of the power unit.
6. Oil changing is required after the initial 100 operation hours, afterwards once every 3000 hours.

## POWER UNITS ORDERING GUIDANCE

**YBZ**  —       /

(1) (2) (3) (4) (5) (6) (7) (8) (9) (10) (11) (12) (13) (14)

- (1) Product name:hydraulic power units
- (2) Series No., which would be changed once there comes big improvement of the whole power units. It comes into 1,2,3,4. Especially, the No.5 represents manifold made of aluminium.
- (3) System pressure, which is used to point out the preset pressure of the relief valve.  
A—1.6Mpa B—2.5Mpa C—6.3Mpa D—10Mpa E—16Mpa F—20Mpa G—25Mpa H—31.5Mpa
- (4) Rated pump displacement
  - ① CBK 泵 /CBK series pumps;  
0.63ml/r 0.8ml/r 1.2ml/r 1.6ml/r 2.1ml/r 2.5ml/r 2.7ml/r 3.2ml/r 3.7ml/r 4.2ml/r 5ml/r 6ml/r
  - ② CBG 泵 /CBG series pumps;  
2ml/r 3ml/r 3.5ml/r 4ml/r
  - ③ CBE 泵 /CBE series pumps  
0.26ml/r 0.32ml/r 0.38ml/r 0.5ml/r 0.63ml/r 0.88ml/r 1.00ml/r 1.25ml/r 1.5ml/r
- (5) Oil tank capacity  
U—0.5L V—0.8L W—1.0L S—1.4L Y—1.5L Z—2.0L A—3.0L or 4.0L B—5L or 6L C—8.0L D—10L  
E—12L F—14L G—16L H—20L I—22L J—25L K—35L L—50L
- (6) Motor voltage
  - ① DC motor: 1—12V 2—24V 9—48V 10—72V
  - ② AC motor: 3—220V, single phase 5—110V, single phase  
4—380V, three phase 6—415V, three phase
- (7) Motor power
  - ① DC motor: X—0.25kw S—0.5kw T—0.8kw U—1.0kw V—1.2kw W—1.5kw A—2.0kw B—3.0kw
  - ② AC motor: C—0.37kw D—0.55kw E—0.75kw F—1.1kw G—1.5kw H—2.2kw I—3.0kw J—4.0kw
- (8) Hydraulic circuit No. See the hydraulic schematic circuit in the following page.
- (9) Motor type
 

O—no motor  
T—the motor with Special requirements

  - ① AC motors
 

A—Steel housing, vertical & horizontal, 9T Spline, the center distance of the mounting hole is 4.4488x4.4488.

B—Steel housing, vertical, 9T Spline, the center distance of the mounting hole is 4.4488x4.4488.

G—Extruding aluminum housing, vertical & horizontal, Tang, the center distance of the mounting hole is 4.4488x4.4488.

H—Extruding aluminum housing, vertical, Tang, the center distance of the mounting hole is 4.4488x4.4488.

L—Casting aluminium housing, vertical & horizontal, 9T Spline, the center distance of the mounting hole is 4.4488x4.4488.

M—Casting aluminium housing, vertical, 9T Spline, the center distance of the mounting hole is 4.4488x4.4488.

N—Casting aluminium housing, vertical & horizontal, Tang, the center distance of the mounting hole is 4.622x4.622.
  - ② DC motors
 

U—(250W—800W) /3 " DC motor (0.34HP—1.1HP)

V—(800W—1200W) /3.5 " DC motor (1.1HP—1.6HP)

W—(1.5KW—2.2KW) /4.5 " DC motor (2HP—3HP)

X—(3W) /5 " DC motor (4HP)

## POWER UNITS ORDERING GUIDANCE

(10) Motor speed

O—Hydraulic system in the non-motor  
T—the motor with Special requirements

①	AC motor, 50HZ	A — 960rpm	B — 1400rpm	C — 2800rpm	D — 1400/2800rpm
②	AC motor, 60HZ	J — 1100rpm	K — 1750rpm	L — 3450rpm	
③	DC motor	U — 2500rpm	V — 3500rpm	W — 4500rpm	

(11) 【油箱外型】 Tank appearance

A— $\phi$  120' caliber  $\phi$  120, steel, round, horizontal.  
B— $\phi$  120' caliber  $\phi$  120, steel, round, vertical.  
C— $\phi$  120' caliber  $\phi$  120, steel, square, horizontal.  
D— $\phi$  120' caliber  $\phi$  120, steel, square, vertical.  
E— $\phi$  138' caliber  $\phi$  138, steel, round, horizontal.  
F— $\phi$  138' caliber  $\phi$  138, steel, round, vertical.  
G— $\phi$  138' caliber  $\phi$  138, steel, square, horizontal.  
H— $\phi$  138' caliber  $\phi$  138, steel, square, vertical.  
J— $\phi$  94' caliber  $\phi$  94, steel, round, horizontal.  
K— $\phi$  94' caliber  $\phi$  94, steel, round, vertical.  
L— $\phi$  94' caliber  $\phi$  94, steel, square, horizontal.  
M— $\phi$  94' caliber  $\phi$  94, steel, square, vertical.  
N— $\phi$  200' caliber  $\phi$  120, steel, square, vertical.  
P— $\phi$  120' caliber  $\phi$  120, blow-molded plastic, round, horizontal.  
Q— $\phi$  120' caliber  $\phi$  120, blow-molded plastic, round, vertical.  
R—caliber  $\phi$  73, steel, square, vertical.  
S—caliber  $\phi$  73, steel, square, vertical.  
U— $\phi$  120, injection molded plastic, round, vertical.  
V— $\phi$  120, injection molded plastic, round, vertical.  
O—non-tank  
T—the tank with Special requirements.

(12) 【电磁阀电压】 Solenoid valve volt

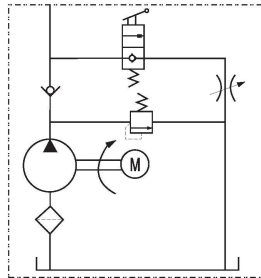
A—12VDC, without manual override function.  
B—24VDC, without manual override function.  
C—24VAC, 50HZ, without manual override function.  
D—110VAC, 50HZ, without manual override function.  
E—220VAC, 50HZ, without manual override function.  
F—110VAC, 60HZ, without manual override function.  
G—220VAC, 60HZ, without manual override function.  
H—12VDC, with manual override function.  
I—24VDC, with manual override function.  
J—24VAC, 50HZ, with manual override function.  
K—110VAC, 50HZ, with manual override function.  
L—220VAC, 50HZ, with manual override function.  
M—110VAC, 60HZ, with manual override function.  
N—220VAC, 60HZ, with manual override function.  
O—No solenoid valve. /  
T—The solenoid valve with special requirements.  
Z—referring to the manual valve with micro switch.

(13) Manifold model is selected by manufacturer.

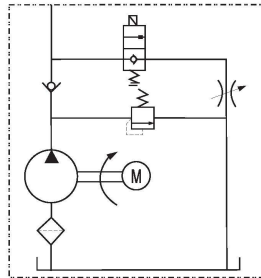
(14) Design NO which is selected by manufacturer, may be 1, 2, 3 or A, B, C.

## HYDRAULIC CIRCUITS FOR POWER UNITS

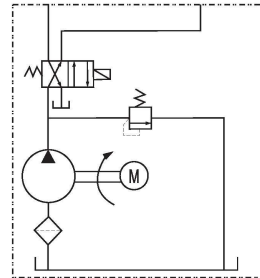
With different combination of the valves, we have more than two hundred hydraulic circuits used in the power units. The typical circuits are shown as follows. We are at your disposal to design and produce the customized circuits.



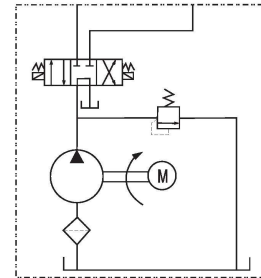
1 #



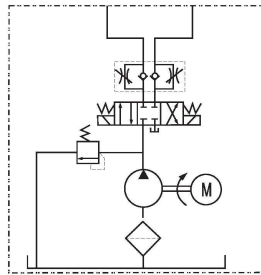
2 #



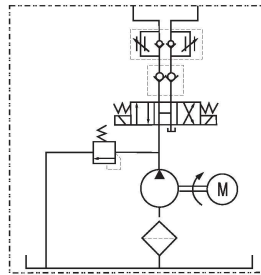
3 #



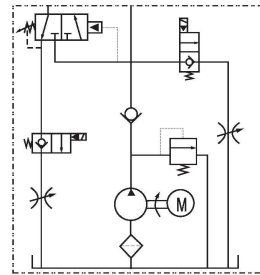
4 #



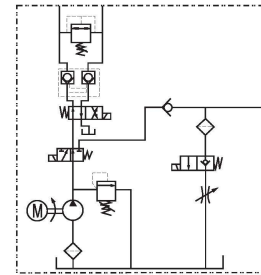
7 #



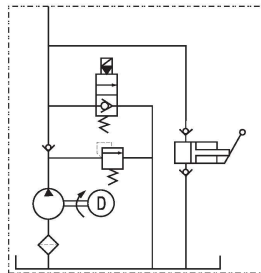
9 #



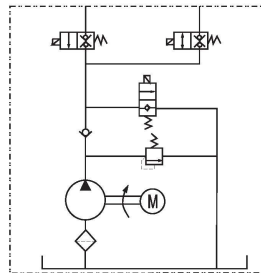
10 #



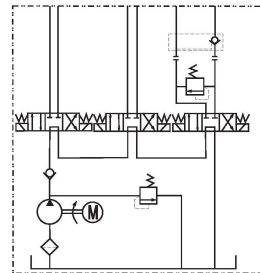
14 #



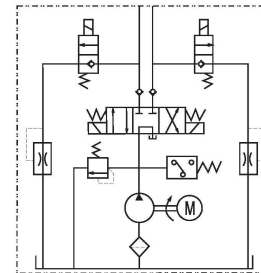
27 #



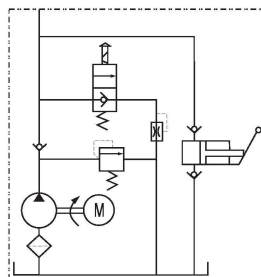
30 #



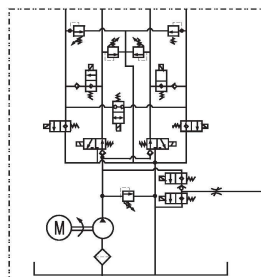
41 #



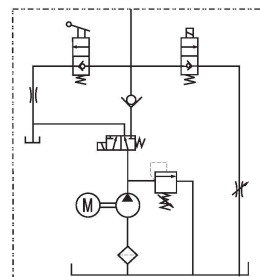
42 #



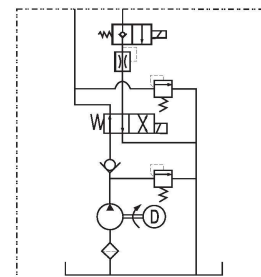
48 #



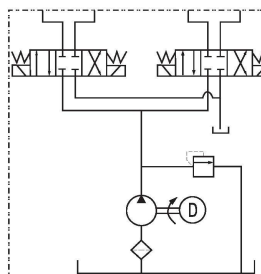
54 #



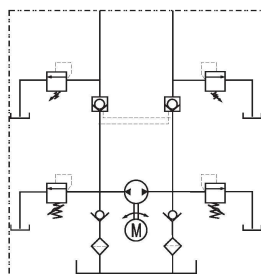
56 #



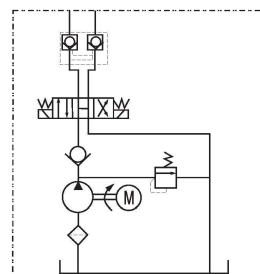
61 #



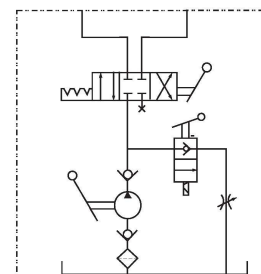
66 #



101 #



209 #



HP