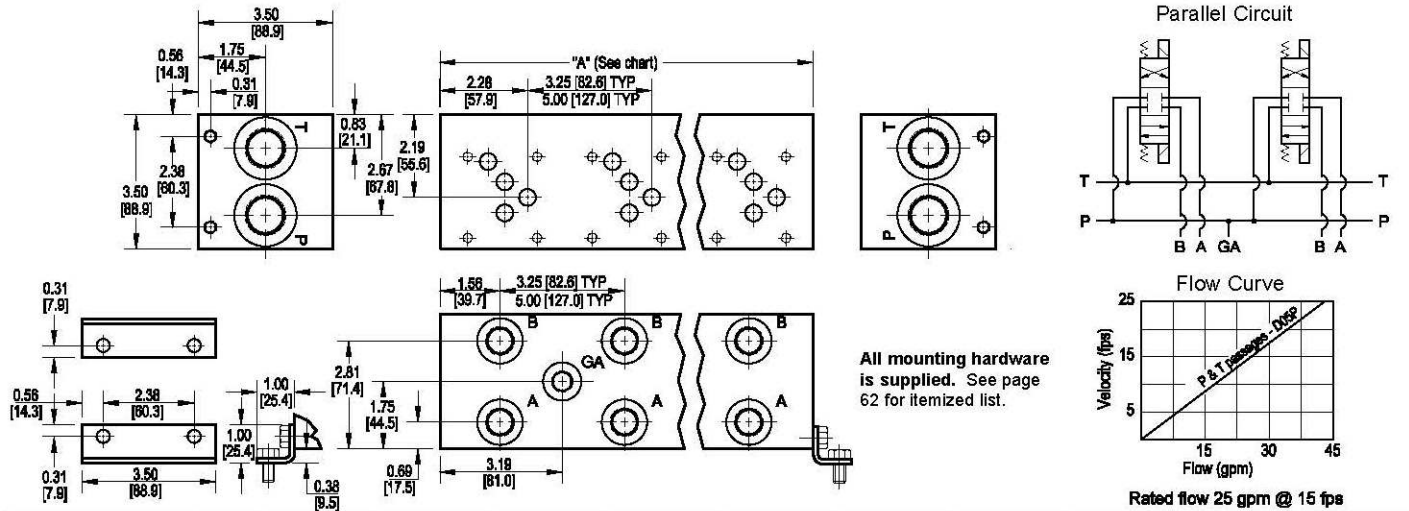


D05 Standard Flow Parallel Manifold



No. of stations	* 01	02	03	04	05	06	07	08	09	10	11	12	13	14	15	16	17	18	19	20	21
"A" length (code 3 spa.) inch [mm]	3.25 [82.6]	6.50 [165.1]	9.75 [247.7]	13.00 [330.2]	16.25 [412.8]	19.50 [495.3]	22.75 [577.9]	26.00 [660.4]	29.25 [743.0]	32.50 [825.5]	35.75 [908.1]	39.00 [990.6]	42.25 [1073.2]	45.50 [1155.7]	48.75 [1238.3]	52.00 [1320.8]	55.25 [1403.4]	58.50 [1485.9]	61.75 [1568.5]	65.00 [1651.0]	68.25 [1733.6]
apx. weight alum lb [kg]	4 [2]	8 [4]	11 [5]	14 [7]	17 [8]	21 [10]	24 [11]	27 [12]	30 [14]	34 [15]	37 [17]	41 [19]	44 [20]	47 [21]	51 [23]	55 [25]	58 [26]	61 [28]	64 [29]	67 [30]	71 [32]
apx. weight iron lb [kg]	9 [4]	17 [8]	26 [12]	34 [15]	43 [20]	51 [23]	60 [27]	68 [31]	77 [35]	85 [39]	94 [43]	102 [46]	--	--	--	--	--	--	--	--	--
"A" length (code 5 spa.) inch [mm]	--	8.25 [209.6]	13.25 [336.6]	18.25 [463.6]	23.25 [590.6]	28.25 [717.6]	33.25 [844.6]	38.25 [971.6]	43.25 [1098.6]	48.25 [1225.6]	53.25 [1352.6]	58.25 [1479.6]	63.25 [1606.6]	68.25 [1733.6]	--	--	--	--	--	--	--
apx. weight alum lb [kg]	--	9 [4]	15 [7]	20 [9]	25 [11]	30 [14]	35 [16]	41 [19]	46 [21]	50 [23]	55 [25]	60 [27]	65 [29]	71 [32]	--	--	--	--	--	--	--
apx. weight iron lb [kg]	--	22 [10]	36 [16]	49 [22]	62 [28]	76 [34]	89 [40]	102 [46]	116 [53]	--	--	--	--	--	--	--	--	--	--	--	--

Port code	Valve mtg.	Manifold mtg.
P, S	0.25-20 UNC x 0.75 [19] DP	0.31-18 UNC x 0.44 [11.1] DP
B, M, T	M6 ISO 6H x 0.75 [19] DP	M8 ISO 6H x 0.44 [11.1] DP

* Length of 01 station with relief cavity is 4.50 [114.3]. Gauge port not available on 01 station.

Specifications, descriptions, and dimensional data are subject to correction or change without notice or incurring obligation. Download latest catalog page revisions at www.damanifolds.com.

Ordering Information

Material	Valve Pattern	Circuit	No. of Stations	Valve Spacing	Port Threads	/	Options
----------	---------------	---------	-----------------	---------------	--------------	---	---------

Material	
A	Aluminum - 6061-T6 3000† psi • 20.7 MPa
D	Ductile Iron - D4512 5000† psi • 34.5 MPa
† Working pressure should be considered in accordance with ISO 4413 to determine appropriate material type.	

Circuit	
P	Parallel Circuit Standard Flow

Valve Spacing	
3	3.25 inch 82.6 mm
5	5.00 inch 127.0 mm

Options	
See next page for available options and ordering codes.	

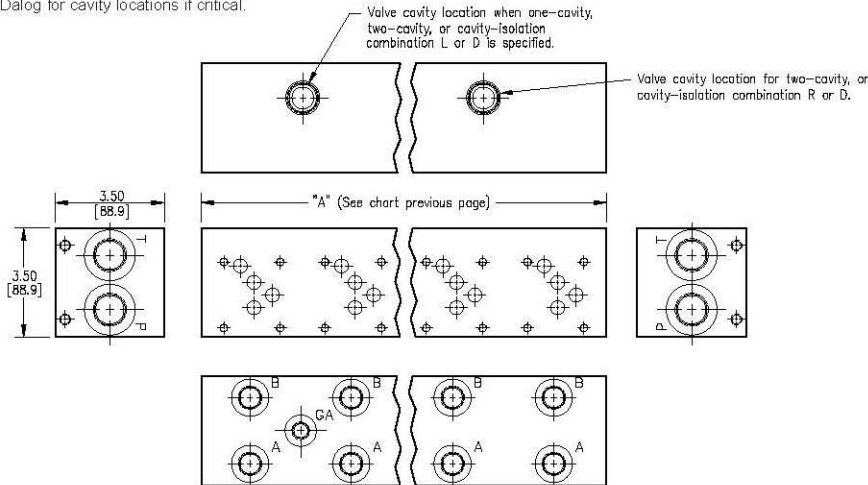
Valve Pattern	
D05	ISO 4401-05-04 NFPA T3.5.1-D05 See Tech Information

No. of Stations	
Aluminum	
01...21	Available with spacing code 3
02...14	Available with spacing code 5
Ductile Iron	
01...12	Available with spacing code 3
02...09	Available with spacing code 5

Port Threads	P & T	A & B	GA
P	NPTF • ANSI B1.20.3	0.75	0.25
S	SAE • ISO 11926	-12	-6
B	BSPP • ISO 1179	0.75	0.50
M	ISO • ISO 6149	M27	M18
T	BSPT • ISO 7	0.75	0.50

Options - D05 Standard Flow Parallel Manifold

Contact Daman or consult web CADalog for cavity locations if critical.



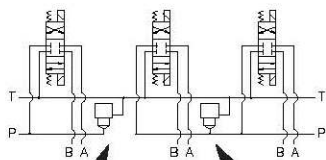
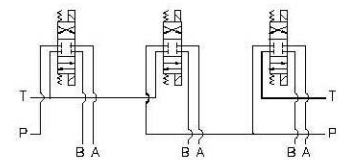
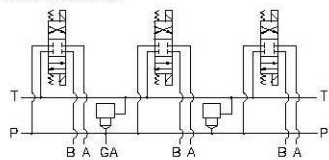
ISOLATIONS		
Daman isolation options allow a manifold to have two independent pressure and/or tank ports. Isolations are drilled rather than plugged to ensure a leakproof and failproof isolation.		
Ordering code letter:	* Isolation is between stations:	Available # of stations:
3.25 [82.6] spacing		
A	01 & 02	02-10
B	02 & 03	03-11
C	03 & 04	04-12
D	04 & 05	05-13
E	05 & 06	06-14
F	06 & 07	07-15
G	07 & 08	08-16
H	08 & 09	09-17
J	09 & 10	10-18
5.00 [127.0] spacing		
A	01 & 02	02-07
B	02 & 03	03-08
C	03 & 04	04-09
D	04 & 05	05-10
E	05 & 06	06-11
F	06 & 07	07-12

Parallel Circuit with one or two Cavities

Parallel Circuit with Isolations

Cavity & Isolation Combinations

* Stations are numbered left to right.



Valves with P in the nose and T out the side must be used.

Manifold shown with P isolation between 1 & 2 (PA), and T isolation between 2 & 3 (TB).

Option code L Cavity left of isolation
Option code R Cavity right of isolation
Option code D includes both cavities

- NOTES:**
- 1) The GA port is not available on a (1) station manifold.
 - 2) The GA port is not available when a pressure isolation is located between stations 1 & 2.
 - 3) Some cavity and isolation combinations are not possible with spacing code 3. Consult factory to determine availability.

Ordering Information



Cavity	
Omit if cavities not required	
C	One Common cavity: With solenoid clearance. C-10-2 (P in nose)
CC	Two Common cavities: With solenoid clearance. C-10-2 (P in nose) Available 03-21 stations with spacing code 3; Available 02-14 stations with spacing code 5. Not available in combination with isolation options.
S	One Sun Cavity: T-3A (P in nose) See Tech Info for valves.

Pressure Isolation	
Omit if P isolation not required	
PA...PJ	Available with spacing code 3
PA...PF	Available with spacing code 5

Tank Isolation	
Omit if T isolation not required	
TA...TJ	Available with spacing code 3
TA...TF	Available with spacing code 5

Cavity & Isolation Combinations	
Specify when using a combination of cavity and isolation options. Cavities do have solenoid clearance.	
L	Cavity is located left of the isolation.
R	Cavity is located right of the isolation.
D	Two cavities, one each side of isolation. (Use with cavity option codes C or S only.)