

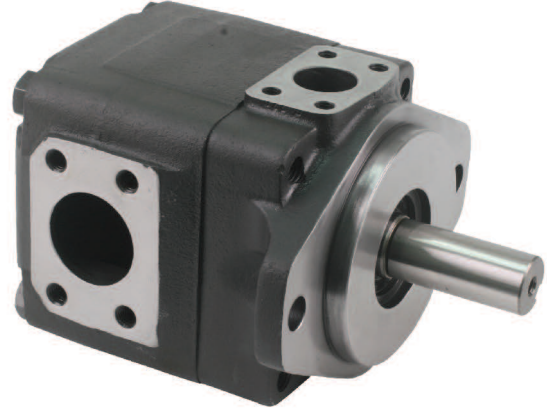
High Pressure Single Vane Pump

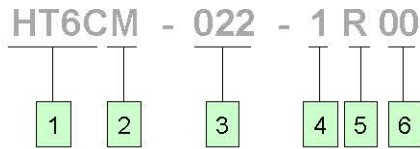
HT6C/HT6D/HT7E Series



Features

- HT6C, HT6D and HT7E Series are fixed displacement and balanced type single vane pumps. The pump is designed for higher operating pressure and greater flow at the same housing size.
- With a balanced pin-vane design, outlet pressure is continuously applied only the pin. The pin provides the steady light force against the vane. Top and bottom areas of the vane are subject to the same pressure, either inlet or outlet pressure, depending on the vane's location during rotor rotation. This pin-vane design minimizes noise level and improves volumetric efficiency.
- With the cartridge independent of the shaft, allowing for easy change of flow capacity and field servicing without removing the pump from its mounting.





1 Model
HT6C, HT6D, HT7E

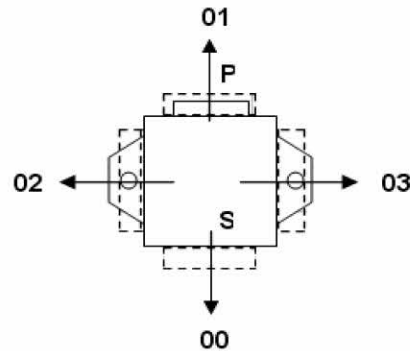
2 Series
Omit - Industrial
M - Mobile

3 Ring Size (USgallon)
HT6C - 003, 005, 006, 008, 010, 012, 014, 017, 020, 022, 025, 028, 031
HT6D - 014, 020, 024, 028, 031, 035, 038, 042, 045, 050, 061
HT7E - 042, 045, 050, 052, 054, 057, 062, 066, 072, 085

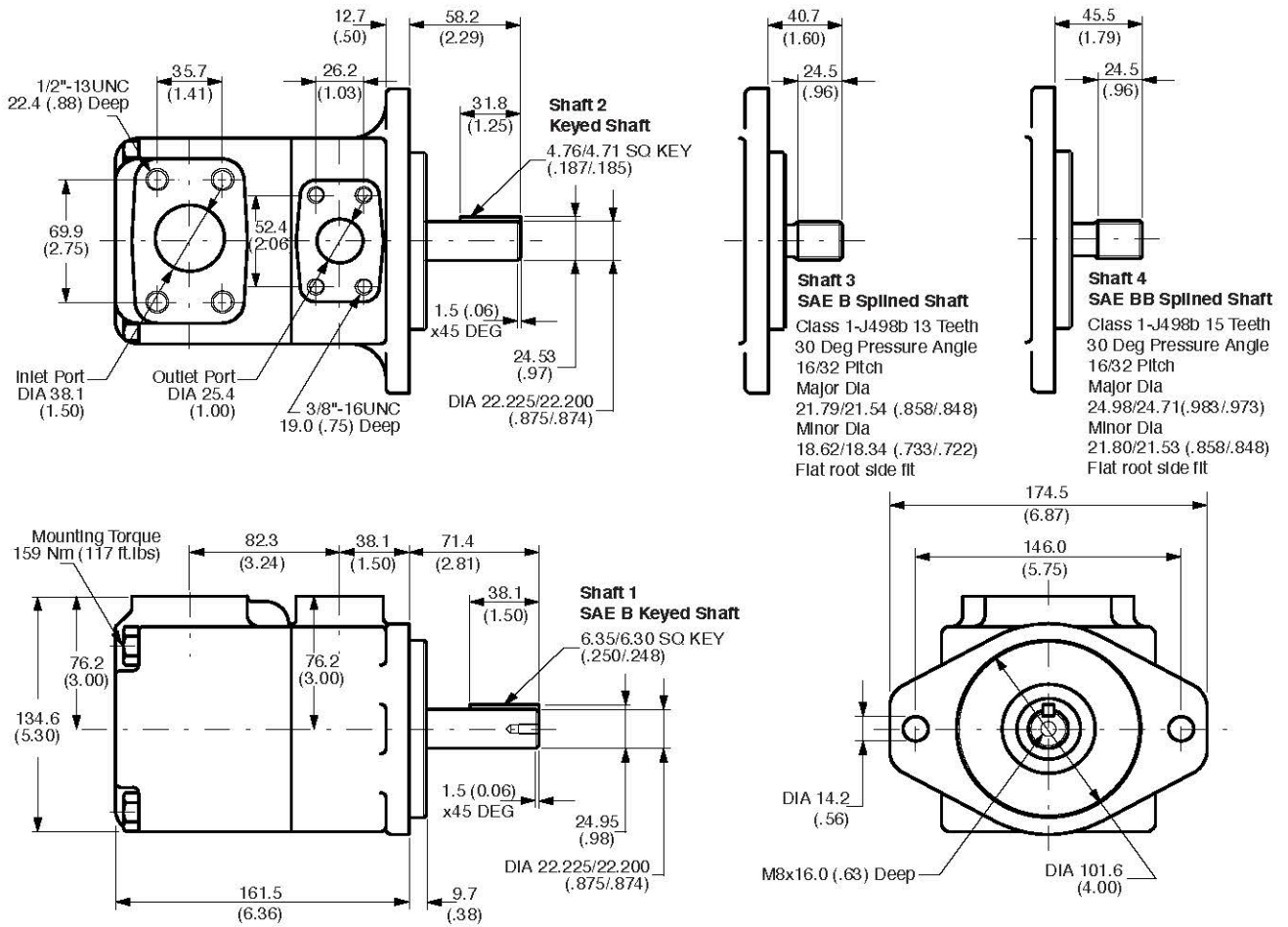
4 Shaft
For HT6C
1 - SAE B Keyed Shaft
2 - Keyed Shaft
3 - SAE B Splined Shaft
4 - SAE BB Splined Shaft
For HT6D
1 - SAE C Keyed Shaft
2 - Keyed Shaft
3 - SAE C Splined Shaft
4 - Splined Shaft
For HT7E
1 - SAE CC Keyed Shaft
2 - Keyed Shaft
3 - SAE C Splined Shaft

5 Shaft Rotation
(Viewed from shaft end)
Omit - Turn right
L - Turn left

6 Inlet Port position
(Viewed from cover end)
00 - Opposite Outlet
02 - 90° CCW from Outlet
01 - Inline with Outlet
03 - 90° CW from Outlet

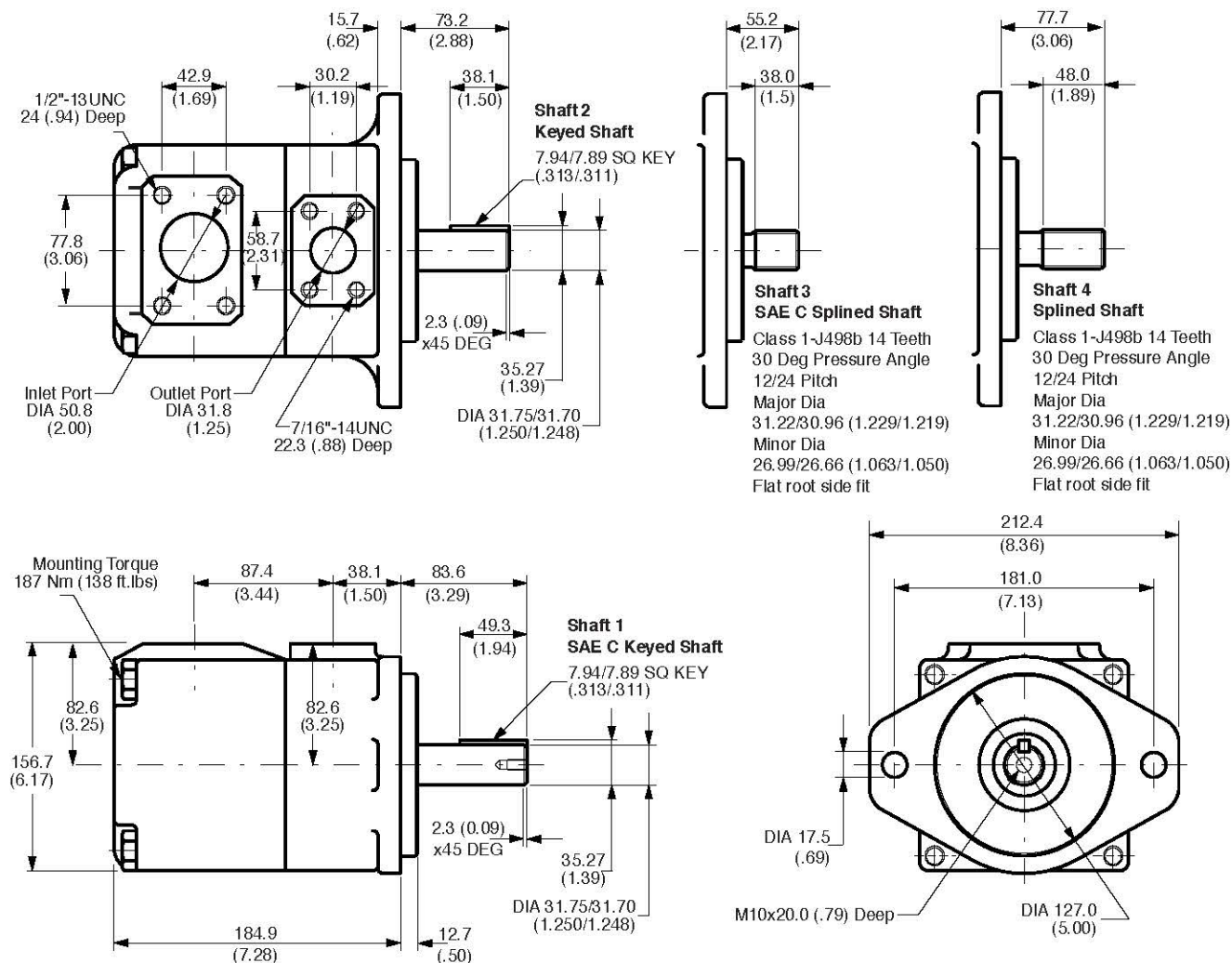


(*Special shaft for mobile use available upon request)



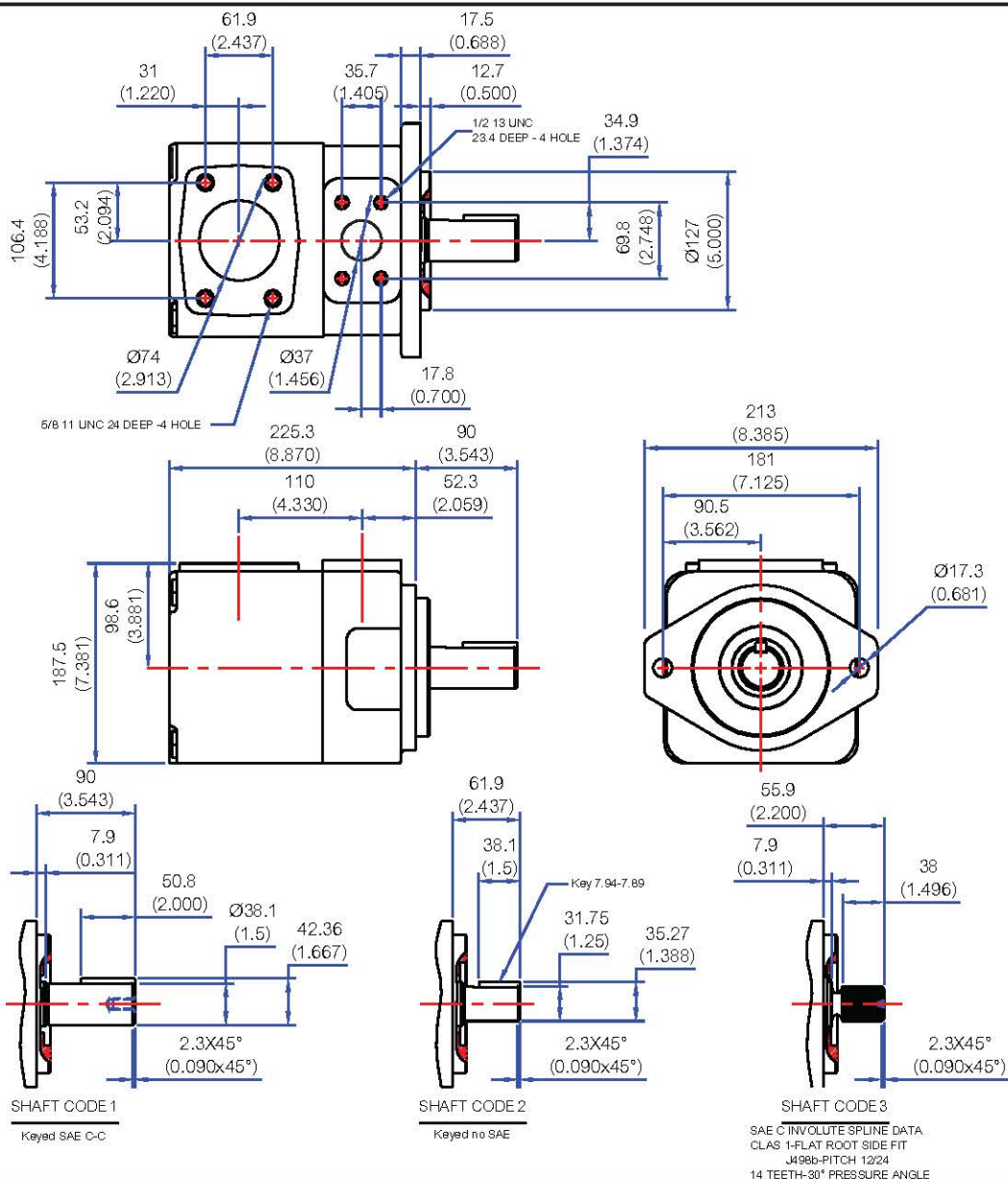
Specifications

Size	Displacement cm ³ /r (in ³ /r)	Max Speed rpm	Min Speed rpm	Max Intermittent Pressure bar (psi)	Max Continuous Pressure bar (psi)	Weight kg (lb)
003	10.8 (0.66)	2800	600	280 (4000)	240 (3500)	15 (34)
005	17.2 (1.05)					
006	21.3 (1.30)					
008	26.4 (1.61)					
010	34.1 (2.08)					
012	37.1 (2.26)					
014	46.0 (2.81)					
017	58.3 (3.56)					
020	63.8 (3.89)	2500	600	210 (3000)	160 (2300)	
022	70.3 (4.29)					
025	79.3 (4.84)					
028	88.8 (5.42)					
031	100.0 (6.10)					



Specifications

Size	Displacement cm ³ /r (in ³ /r)	Max Speed rpm	Min Speed rpm	Max Intermittent Pressure bar (psi)	Max Continuous Pressure bar (psi)	Weight kg (lb)
014	47.6 (2.90)	2500	600	240 (3500)	210 (3000)	24 (53)
020	66.0 (4.03)					
024	79.5 (4.85)					
028	89.7 (5.47)					
031	98.3 (6.00)					
035	111.0 (6.77)					
038	120.3 (7.34)					
042	136.0 (8.30)	2200		210 (3000)	160 (2320)	
045	145.7 (8.89)					
050	158.0 (9.64)					
061	190.5 (11.63)	1800		120 (1700)	80 (1160)	



Specifications

Size	Displacement cm ³ /r (in ³ /r)	Max Speed rpm	Max Speed rpm	Max Intermittent Pressure bar (psi)	Max Continuous Pressure bar (psi)	Weight kg (lb)
042	132.3 (8.06)	2200	600	240	210	43.3 (95.26)
045	142.4 (8.68)					
050	158.5 (9.66)					
052	164.8 (10.04)					
054	171.0 (10.42)					
057	183.3 (11.17)					
062	196.7 (11.99)					
066	213.3 (13.00)	2000	600	90	75	43.3 (95.26)
072	227.1 (13.84)					
085	268.8 (16.4)					