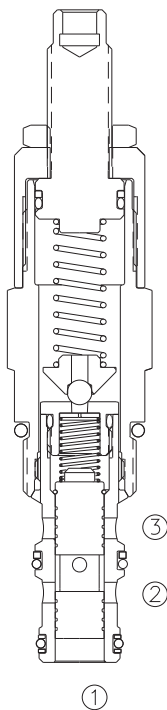


LPPR-10

先导式减压/溢流阀

Pilot-Operated, Pressure Reducing/Relieving Valve



OPERATION

In its steady state, the valve allows flow to pass bi-directionally from ② to ①, with the spring chamber constantly drained at ③.

On attainment of a pre-determined pressure at ①, the cartridge shifts to restrict input flow at ②, thereby regulating pressure at ①. In this mode, the valve will also relieve ① to ③ over the reducing setting.

在①口的压力低于溢流设定的压力时，从②到①减压。弹簧腔内泄漏在③口。

当①口压力达到预设定的压力时，②口渐渐关闭，①到③开始溢流。

Deadband (from reducing to relieving) pressure rise over reduced pressure setting:

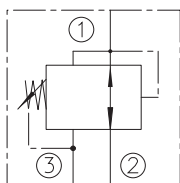
Non-flow condition: approximately 0.55 bar (8 psi); with flow: approximately 2.1 bar(30 psi).

FEATURES

特性

- Adjustments prohibit springs from going solid. 调节时，弹簧不会被压并。
- Optional spring ranges to 207 bar . 弹簧选择范围可达到207bar。
- Hardened spool and cage for long life. 长寿命的阀。
- Industry common cavity. 工业通用插孔。

SYMBOL



SPECIFICATIONS

技术参数

Operating Pressure (工作压力) : 207 bar

Flow (流量) : See Performance Chart

Internal Leakage ②to③ (内泄漏②到③) :

82 cc/minute max. at ΔP 207 bar

Standard Spring Ranges (弹簧调压范围) Reducing Function:

6.9 to 27.6 bar; 10.3 to 103bar; 27.6 to 207 bar;

Temperature(温度) : -22°F to +250°F (-30°C to +120°C)

Filtration (过滤网) : Critical Application-ISO 16/12.

Non-Critical Application-ISO 19/15

Fluids(流体) : Mineral-based fluids.

For other fluid compatibility consult factory.

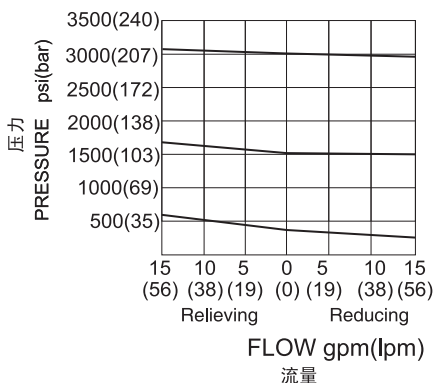
Cavity (插孔) : 10-3; See page 363

Body Material (阀块材料) : Anodized 6061T6 aluminum alloy rated at 207 Bar.

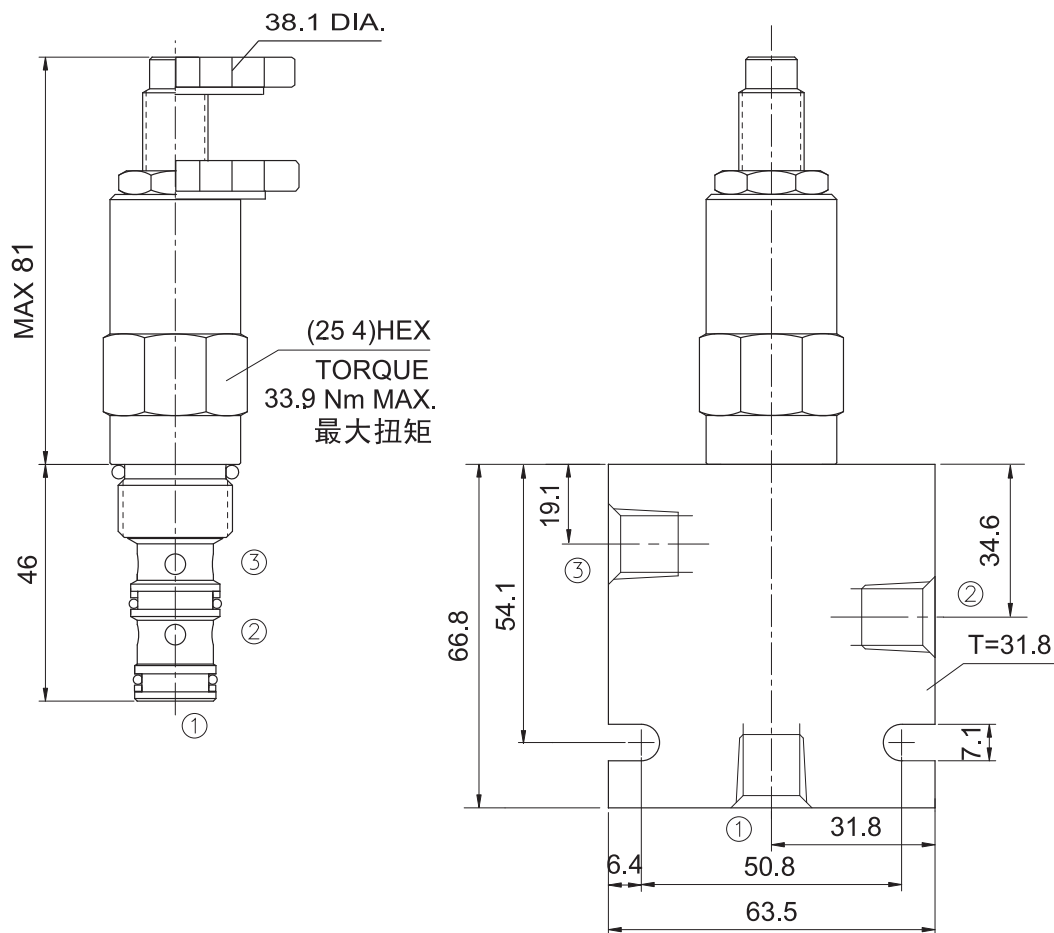
6061-T6, 允许使用最大压力207Bar.

PERFORMANCE CHART

150 ssu/32 cSt OIL @ 100°F / 38°C



INSTALLATION DIMENSIONS



Unit=Millimeters

TO ORDER

LPPR - 10 - ** - * /**** - **

PILOT-OPERATED, PRESSURE
REDUCING/ RELIEVING VALVE
直动式减压/溢流阀

CAVITY 插孔

Spring Range 弹簧调压范围

4=100 to 400 Psi (6.9 to 27.6bar) Preset:13.8bar;
15=150 to1500 Psi (10.3to 103bar) Preset:56bar;
30=400 to 3000 Psi(27.6 to 207bar) Preset:103bar;

BODY PORTING 阀块油口
3N=3/8PTF
6T=SAE6
8T=SAE8
Other Porting is Available
其它螺纹油口也是可能的
(Omit for Cartridge only
省略为不带阀块)

SETTING IN BAR 设定压力 (BAR)
EXAMPLE: 0100=100BAR

K 1-1/2' Dia. Knob
调节手轮
(Omit for 1/4' Hex Allen head)
内六角调节杆